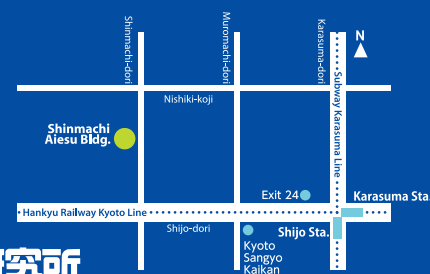


一般社団法人
システム科学研究所
Institute of Systems Science Research

PROFILE



一般社団法人
システム科学研究所

428 Komusubidana-cho, Nakagyo-ku, Kyoto-Shi, Kyoto 604-8223, Japan
TEL : +81-75-221-3022, FAX : +81-75-231-4404, URL : <http://www.issr-kyoto.or.jp>

Message From the Chairman

ごあいさつ

In 1972, the Institute of Systems Science Research (ISSR) was founded as an incorporated association under the jurisdiction of the Ministry of International Trade and Industry (now the Ministry of Economy, Trade and Industry) by people in the financial and academic communities as well as other intellectuals of Kyoto to address Japan's growing need at that time for a think tank to conduct comprehensive policy research.

More than 40 years have passed since then, and ISSR has performed analysis and research and undertaken various public enterprises related to social systems, including urban planning, regional planning, prefectural economic development planning, transportation planning, regional welfare planning, environmental planning and regional informatization planning. Revisions to the public-interest corporation system went into effect in 2008, and on April 1, 2012, the Cabinet Office recognized the results ISSR had produced with its activities, and changed it from an incorporated association to a general incorporated association under its control.

Now more than ever, as Japan faces an unprecedented era of both tax revenue and population shrinkage, we encounter more and more difficult policy challenges that conventional social systems are no longer equipped to handle. Therefore, we must strive to revise these social systems so that they are beneficial to urban and industrial structures as well as various systems and the lifestyles of Japanese people.

We at ISSR, want to use the experience and knowledge we have gained over the years as a policy research think tank and the advantage of our association with the academic community, something our organization has had since its founding, to bring the private and public sectors together in tackling those new challenges.

We are grateful for your kind patronage and hope to continue receiving it in the future.

Yasuhiko Nomura, Ph.D
Chairman of the Board of Directors

Business Outline

事業概要

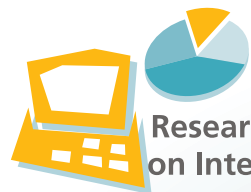
ISSR aims to answer its public calling as a public-interest corporation by contributing to the improvement of the lives of Japanese people and toward social and economic development through the scientific analysis, research and development of social and economic systems.

To realize these objectives, we implement the following three operations:



The basis of ISSR's operations and activities is not limited to research and analysis work requested of us from national and local government agencies but also includes research for the industrial community, universities, private corporations, local associations and more.

Research & Analysis



Research & Analysis on Integrated Policy

We conduct analysis and research on integrated policy focused on a wide range of fields - from grand designs and regional informatization to social welfare and cultural promotion.

- Comprehensive planning
- Regional revitalization planning
- Regional informatization planning
- Social welfare planning
- Industrial promotion planning
- Cultural promotion planning



Research & Analysis on Transportation Policy

We analyze and research traffic behavior, applications to transportation policy and other areas of transportation policy using road traffic demand projections, road network improvement plans, railway demand projections, public transportation network improvement plans, integrated transportation plans as well as GPS and other data.

- Integrated transportation system planning
- Railway and public transportation planning
- Road network planning
- Urban transportation planning
- Regional transportation planning
- Road traffic information planning



Research & Analysis on Urban Policy

We research and analyze urban policy such as urban development master plans and land-use plans.

- Regional planning
- Urban development master planning
- Urban development road planning
- Station plaza planning
- Downtown area improvement planning
- Land-use planning



Research & Analysis on Environmental Policy

We research and analyze environmental policy such as environmental master plans and environmental study plans.

- Environmental master planning
- Global environment planning
- Natural and comfortable environment conservation and regeneration planning
- Environmental study planning

In order to face policy challenges that constantly change and grow more complex, we conduct research and development on new techniques and methods as well as on social and economic circumstances, both on our own and together with universities and other specialized institutions.

Recent Major Research and Development Projects

"Researching Road-Network vulnerability analysis" (Project manager : Atsushi Koike, Professor Kobe University)	2014
"Researching Mobility Management"	Internal research 2014
"Researching Transportation economic analysis" (Project manager : Atsushi Koike, Professor Kobe University)	2014
"Researching Road Evaluations Made Using Information from Twitter"	Internal research 2013
"Researching the Applicability of Developing and Deploying Simple Traffic Volume Observation Instruments"	Internal research 2013
"Researching Mobility Management"	Internal research 2012
"Researching Traffic Measures and Tourism Promotion" (Project manager : Motohiro Fujita, Professor at Nagoya Institute of Technology)	2012
"Researching Smartphone Applications for Promoting City Bus Ridership"	Internal research 2012
"Researching the Potential of a Sharing Society" (Project manager : Satoshi Fujii, Professor at Kyoto University)	2011
"Researching Surveys on Traffic Behavior Using Opinion Polls"	Internal research 2011
"Researching the RAEM-Light Economic Analysis Model" (Project manager : Atsushi Koike, Professor at Kobe University)	2011
"Researching Surveys on Traffic Behavior Using Opinion Polls"	Internal research 2010
"Considering Policy for Popularizing Car Sharing in Kyoto Prefecture" (Project manager : Satoshi Fujii, Professor at Kyoto University)	2010
"Researching Road Map Creation Methods Using Mobile Data" (Project manager : Yasuo Asakura, Professor at Tokyo Institute of Technology)	2010
"Researching Congestion Counter-Measures at Sightseeing Area" (Project manager : Motohiro Fujita, Professor at Nagoya Institute of Technology)	2010
"Researching Mobility Management"	Internal research 2009
"Researching Congestion Counter-Measures at Sightseeing Area " (Project manager : Motohiro Fujita, Professor at Nagoya Institute of Technology)	2009
"Considering Policy for Popularizing Car Sharing in Kyoto Prefecture"	Internal research 2009
"Researching Intelligent Connections for DRM and Traffic Assignment Networks"	Internal research 2009
"Researching Road Map Creation Methods Using Mobile Data" (Project manager : Yasuo Asakura, Professor at Kobe University)	2008
"Researching the RAEM-Light Economic Analysis Model " (Project manager : Atsushi Koike, Associate Professor at Tottori University)	2008
"Researching Intelligent Connections for DRM and Traffic Assignment Network"	Internal research 2008

Public Service

公益事業

The Kometani-Sasaki Foundation was established to honor the important work done by the late Dr. Eiji Kometani, a giant in traffic engineering and urban planning and a former ISSR chairman, and the late Dr. Tsuna Sasaki, who also served as ISSR chairman and was a leader in traffic engineering and climatology engineering. One of the main projects the foundation funds is the Kometani-Sasaki Award, a scholarship awarded each year to young researchers and engineers to help with their research activities.

In addition, we host public symposiums on the most prominent policy challenges of each year to which are invited researchers and government personnel.

Recent Major Social Projects

(Symposiums)

The Way of Municipalities and Regions in the Full-fledged Population Decline Society Yoshihiro Katayama, Professor at Keiou University/Former Tottori Prefecture Governor Former Minister of Internal Affairs and Communications et al.	2014
Health and Community Building: Considering a New Relationship Between Health and Daily Life Tsutomu Doi, Project Professor at Kyoto University et al.	2013
Building Disaster-Resistant Communities through Disaster Management Education and Information Sharing: Learning from the Great East Japan Earthquake and Heavy Rains, Preparing for the Future Disasters Toshitaka Katada, Professor at Gunma University et al.	2012
Road Pricing Symposium: Effective and Sustainable Road Funding Jointly hosted with the Japan Research Center for Transport Policy, Katsutoshi Ota, Honorary Professor at the University of Tokyo; Toshinori Nemoto, Professor at Hitotsubashi University et al.	2012
Effects of Municipal Mergers and the Future of Community Building: Imagining a Future for Merged Municipalities as the Birth Rate Falls, the Population Ages and Society Becomes Informatized Junichi Takayama, Professor at Kanazawa University et al.	2011
Landscape Assets and Regional Vitality: Community Building through Landscape Information Akihiro Kinda, Honorary Professor at Kyoto University President of the National Institute of Humanities et al.	2010
Survival Strategies for Future Urban and Regional Areas: Prescriptions for Urban and Regional Planning in an Era of Competition Between Regions Masuo Kashiwadani, Professor at the Graduate School of Science and Engineering Director of the Center for Disaster Management Informatics Research at Ehime University et al.	2009
Regional Efforts Toward a Low-Carbon Society: Creating a System Where Everyone Shares Responsibility for CO ₂ Emissions Toshiharu Kato, Carbon Reduction Project Representative and Eco-Money Advocate et al.	2008
Tourism Strategies in an Era of Choice: Creating Appeal with Stories of People and Communities Yukihiko Kadono, Professor at Kwansei Gakuin University et al.	2007
Mobility Management: Individual, Large-Scale Communication for Road and Transport Administration Satoshi Fujii, Professor at Tokyo Institute of Technology et al.	2006

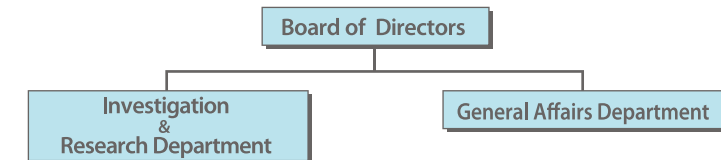
Organization

研究所案内

Overview

Name	Institute of Systems Science Research (ISSR) Founded
Founded	January 1972, incorporated association approved by MITI April 2012, changed to a general incorporated association approved by Cabinet Office
Approving government agency	Cabinet Office
Number of permanent employees	27 (including 16 researchers)

Organizational Chart



Board Members

Directors	Chairman (Representative Director)	Yasuhiro Nomura Former Chairman and Representative Director of Nikken Sekkei Civil Engineering Ltd
	Vice Chairman (Representative Director)	Katsunao Kondo Honorary Professor at the University of Marketing and Distribution Sciences
	Executive Director (Representative Director)	Kazuhiko Asai
	Director	Yasuo Asakura Professor at Tokyo Institute of Technology
		Katsumi Obuchi Former Chairman of the SSB Quality Environment Division at Omron Corporation
		Michio Otokoyama President and Representative Director of Osaka Soto-Kanjo Railway Co., Ltd
		Masashi Kawasaki Professor at Kyoto University
		Hiroimitsu Kumamoto Honorary Professor at Kyoto University
		Yukio Tanaka Executive Director of the Kansai Institute of Information Systems
		Hiroshi Sakaguchi Professor at Ritsumeikan University
		Tsutomu Doi Specially Appointed Professor at Osaka University Center for the Study of Communication-Design
		Kazuo Nishii Professor at the University of Marketing and Distribution Sciences
		Hideko Fujimoto Professor at Kyoto City University of Arts
		Kazumi Renge Professor at Tezukayama University
		Hideo Moritsu Professor at the University of Marketing and Distribution Sciences
		Shigeru Namikawa Former Chairman of the Hanshin Expressway Technology Center
		Kiyoshi Nishimura Licensed Tax Accountant

Auditors